

Requête SQL utiles

Correspondance entre code INSEE présent dans additional_data et cor_area_synthese

Trouver les codes INSEE fournis dans le champ additional_data attribut communeInseeCode, existant dans la table ref_geo.l_areas mais qui ne correspondent pas à ceux présent dans la table gn_synthese.cor_area_synthese :

```
WITH communes AS (  
    SELECT la.id_area, la.area_code AS insee_code, la.area_name  
    FROM ref_geo.l_areas AS la  
    WHERE la.id_type = ref_geo.get_id_area_type_by_code('COM')  
    AND la."enable" = TRUE  
)  
SELECT s.unique_id_sinp, s.the_geom_4326,  
s.additional_data::json->>'communeInseeCode' AS code_insee_json, c.area_name  
AS area_name_cas, c.insee_code AS code_insee_cas  
FROM gn_synthese.synthese AS s  
    LEFT JOIN gn_synthese.cor_area_synthese AS cas  
        ON (s.id_synthese = cas.id_synthese)  
    JOIN communes AS c  
        ON (cas.id_area = c.id_area)  
WHERE s."precision" IS NULL  
    AND s.additional_data::json->>'communeInseeCode' != c.insee_code ;
```

Trouver les codes INSEE fournis dans le champ additional_data attribut communeInseeCode qui ne correspondent pas à ceux présent dans la table gn_synthese.cor_area_synthese car ils n'existent pas dans la table ref_geo.l_areas :

```
WITH communes AS (  
    SELECT la.id_area, la.area_code AS insee_code, la.area_name  
    FROM ref_geo.l_areas AS la  
    WHERE la.id_type = ref_geo.get_id_area_type_by_code('COM')  
    AND la."enable" = TRUE  
)  
SELECT DISTINCT s.additional_data::json->>'communeInseeCode' AS  
code_insee_json  
FROM gn_synthese.synthese AS s  
    LEFT JOIN gn_synthese.cor_area_synthese AS cas  
        ON (s.id_synthese = cas.id_synthese)  
    JOIN communes AS c  
        ON (cas.id_area = c.id_area)  
WHERE s."precision" IS NULL  
    AND s.additional_data::json->>'communeInseeCode' != c.insee_code  
    AND s.additional_data::json->>'communeInseeCode' NOT IN (SELECT  
insee_code FROM communes);
```

Calculer le rayon du cercle comprenant un polygone (communes)



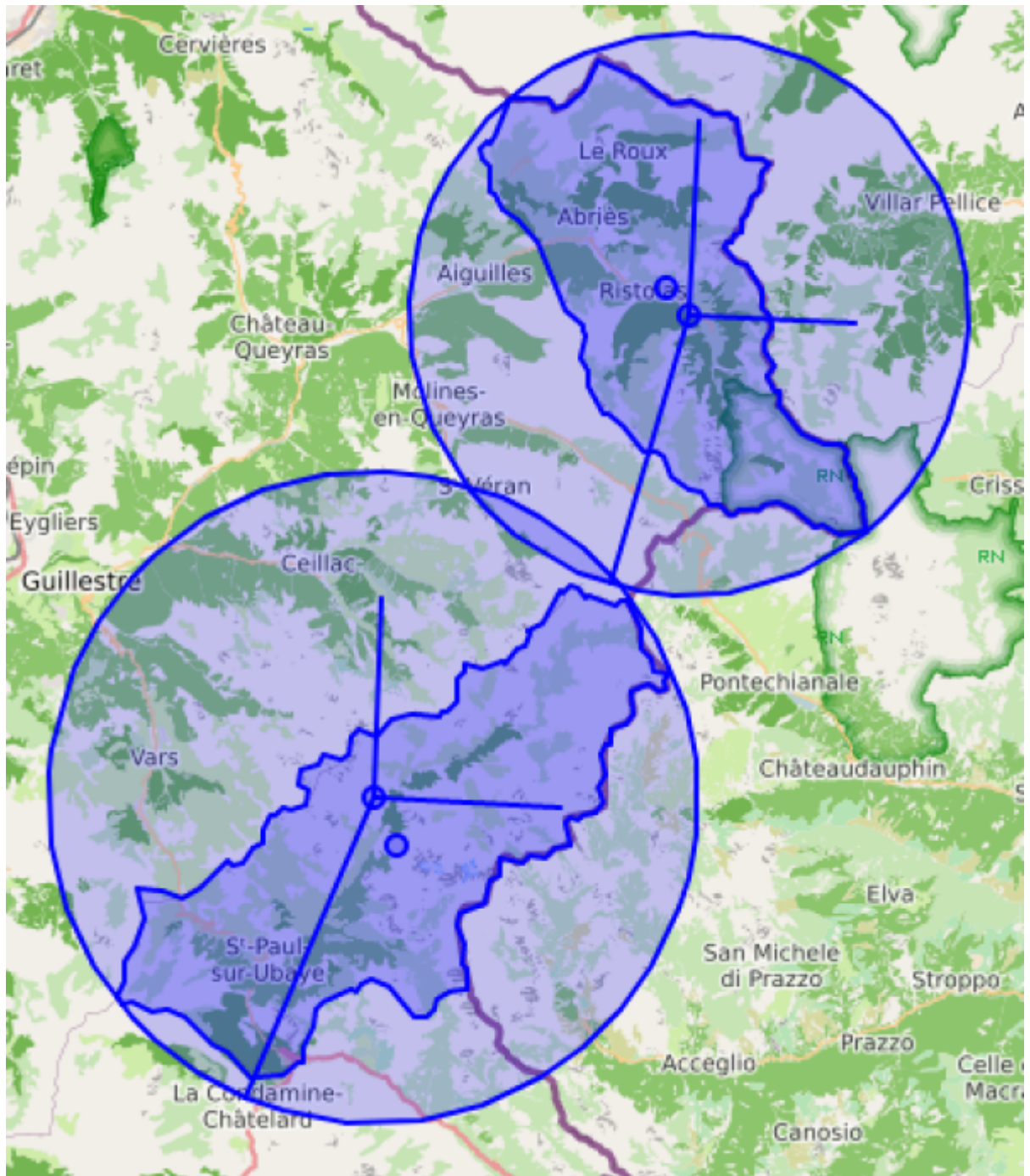
```

SELECT
  unique_id_sinp,
  round(radius(ST_MinimumBoundingRadius(la.geom))) AS "precision",
  center(ST_MinimumBoundingRadius(la.geom)) AS rayon,
  ST_MinimumBoundingCircle(la.geom) AS cercle,
  ST_LongestLine(center(ST_MinimumBoundingRadius(la.geom)),
ST_MinimumBoundingCircle(la.geom)) AS rayon,
  st_centroid(la.geom) AS centroid,
  la.geom,
  la.area_name
FROM gn_synthese.synthese AS s
  LEFT JOIN gn_synthese.cor_area_synthese AS cas
    ON (s.id_synthese = cas.id_synthese)
  JOIN ref_geo.l_areas AS la
    ON (cas.id_area = la.id_area)
WHERE s.id_source != gn_synthese.get_id_source_by_name('SI CBN')
  AND s."precision" IS NULL
  AND la.id_type = ref_geo.get_id_area_type_by_code('COM')
LIMIT 100;

```

Différents calcul du rayon moyen d'un polygone

Il est possible d'utiliser :



1. la fonction ST_MinimumBoundingRadius() de Postgis :

```
round(radius(ST_MinimumBoundingRadius(geom)))
```

2. le calcul du rayon d'un cercle à partir de son aire :

```
round(sqrt(st_area(geom)/pi()))::INT
```

La première méthode retourne un rayon plus grand que cela seconde méthode...

```
SELECT
  la.area_name,
  la.area_code,
```

```

round(AVG(ST_Distance(st_centroid(la.geom), com_points.geom))) AS
"precision_avgdistance",
round(|/(st_area(la.geom)/pi()))::INT AS "precision_calculaire",
round(radius(ST_MinimumBoundingRadius(la.geom))) AS
"precision_minboundingradius",
la.geom,
st_centroid(la.geom) AS centroid,
center(ST_MinimumBoundingRadius(la.geom)) AS centre,
ST_MinimumBoundingCircle(la.geom) AS cercle,
ST_LongestLine(center(ST_MinimumBoundingRadius(la.geom)),
ST_MinimumBoundingCircle(la.geom)) AS rayon_minboundingradius,
ST_MakeLine(
center(ST_MinimumBoundingRadius(la.geom)),
ST_SetSRID(
ST_MakePoint(
ST_X(center(ST_MinimumBoundingRadius(la.geom))) +
round(|/(st_area(la.geom)/pi()))::INT,
ST_Y(center(ST_MinimumBoundingRadius(la.geom)))
),
2154
)
) AS rayon_calculaire,
ST_MakeLine(
center(ST_MinimumBoundingRadius(la.geom)),
ST_SetSRID(
ST_MakePoint(
ST_X(center(ST_MinimumBoundingRadius(la.geom))),
ST_Y(center(ST_MinimumBoundingRadius(la.geom))) +
round(AVG(ST_Distance(st_centroid(la.geom), com_points.geom)))
),
2154
)
) AS rayon_avgdistance
FROM ref_geo.l_areas AS la JOIN (
SELECT id_area, (ST_DumpPoints(geom)).*
FROM ref_geo.l_areas
WHERE id_type = ref_geo.get_id_area_type('COM')
) AS com_points
ON (la.id_area = com_points.id_area)
WHERE la.id_type = ref_geo.get_id_area_type('COM')
GROUP BY la.id_area, la.geom, la.area_name, la.area_code
ORDER BY la.id_area
LIMIT 10 ;

```

Déterminer s'il manque des index

Source: <https://salayhin.wordpress.com/2018/01/02/finding-missing-index-in-postgresql/>

```
SELECT
```

```

schemaname,
relname,
seq_scan - idx_scan AS too_much_seq,
CASE
    WHEN seq_scan - COALESCE(idx_scan, 0) > 0 THEN 'Missing Index ?'
    ELSE 'OK'
END,
pg_relation_size(CONCAT(schemaname, '.', relname)::regclass) AS
rel_size,
seq_scan, idx_scan
FROM pg_stat_all_tables
WHERE pg_relation_size(CONCAT(schemaname, '.', relname)::regclass) > 80000
ORDER BY too_much_seq DESC;

```

```

SELECT
x1.table_in_trouble,
pg_relation_size(x1.table_in_trouble) AS sz_n_byts,
x1.seq_scan,
x1.idx_scan,
CASE
    WHEN pg_relation_size(x1.table_in_trouble) > 500000000
        THEN 'Exceeds 500 megs, too large to count in a view. For a count,
count individually'::text
    ELSE COUNT(x1.table_in_trouble)::text
END AS tbl_rec_count,
x1.priority
FROM
(
    SELECT
        (schemaname::text || '.'::text) || relname::text AS table_in_trouble,
        seq_scan,
        idx_scan,
        CASE
            WHEN (seq_scan - idx_scan) < 500
                THEN 'Minor Problem'::text
            WHEN (seq_scan - idx_scan) >= 500 AND (seq_scan - idx_scan) < 2500
                THEN 'Major Problem'::text
            WHEN (seq_scan - idx_scan) >= 2500
                THEN 'Extreme Problem'::text
            ELSE NULL::text
        END AS priority
    FROM
        pg_stat_all_tables
    WHERE
        seq_scan > idx_scan
        AND schemaname != 'pg_catalog'::name
        AND seq_scan > 100) x1
GROUP BY
x1.table_in_trouble,
x1.seq_scan,
x1.idx_scan,

```

```
x1.priority  
ORDER BY  
x1.priority DESC,  
x1.seq_scan;
```

From:

<http://wiki-sinp.cbn-alpin.fr/> - **CBNA SINP**

Permanent link:

<http://wiki-sinp.cbn-alpin.fr/database/requetes-sql-utiles?rev=1634548218>

Last update: **2021/10/18 09:10**

